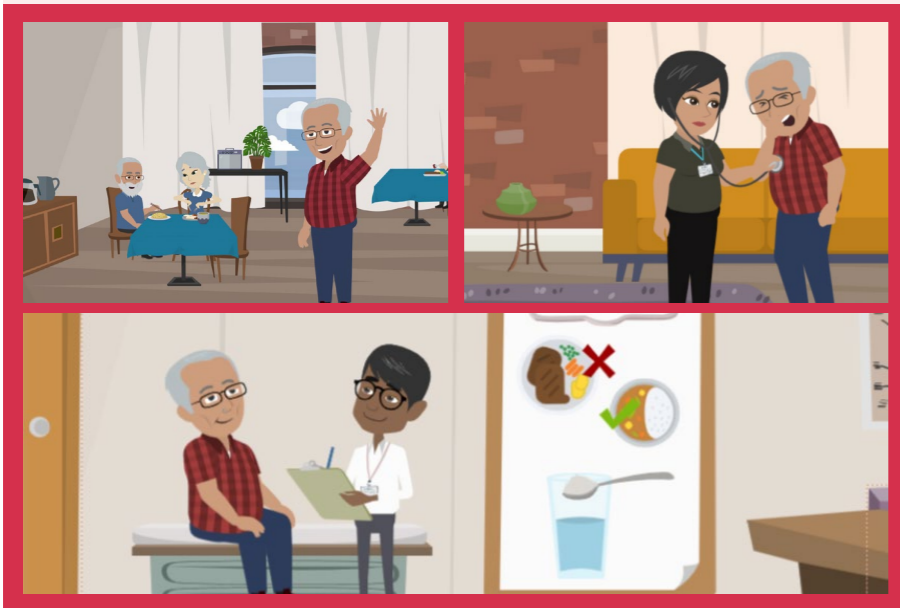


Eating and drinking with acknowledged risk (EDAR) visual scenario

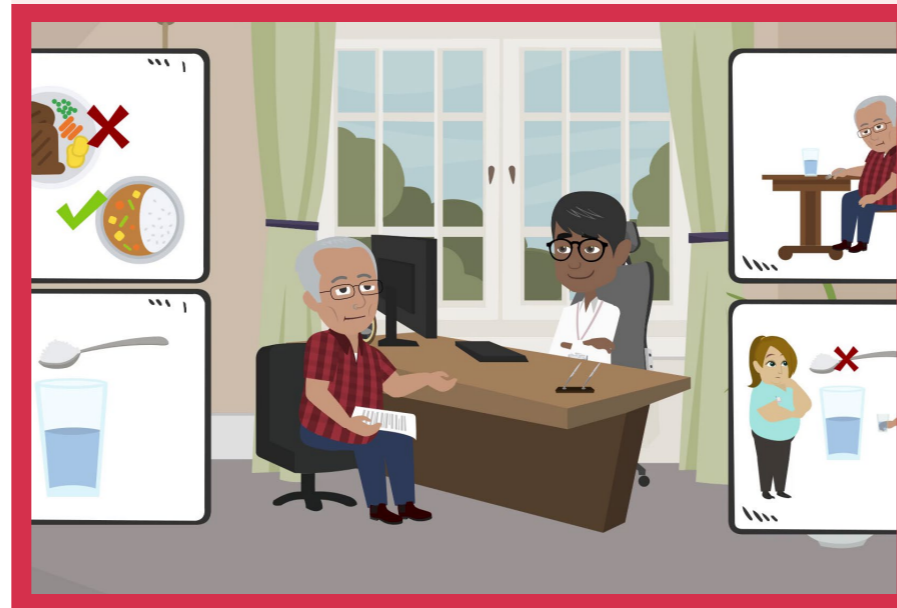


Older person's care team initiates the EDAR process to support their decision to eat and drink with acknowledged risk



EDAR Step 1

Complete a multidisciplinary assessment



EDAR Step 2

Provide relevant information to support informed choice



EDAR Step 3

Create an EDAR management plan



EDAR Step 4

Provide regular review



EDAR Step 5

Share information with the person's care team

